

Scaled data based on original data using

LM-41-14 Approved Method for Photometric Testing Of Indoor Fluorescent Luminaires

Test Report Prepared for

Cooper Lighting Solutions

(formerly Eaton)

Brand: CORELITE

Report Number: ITL68832

Luminaire Tested: **I2-WL-2N5-1C-UNV-AC48-T1-4-SNL1**

Issue Date: 3/3/2020

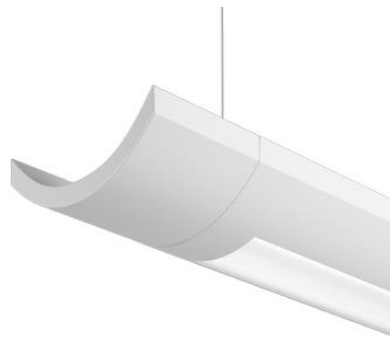
Test Information

Test Method: LM-41-14
Report Number: ITL68832
Test Lab: INDEPENDENT TESTING LABORATORIES, INC.
Issue Date: 3/3/2020
Manufacturer: COOPER LIGHTING SOLUTIONS (FORMERLY EATON)
Product Line: CORELITE
Catalog Number: I2-WL-2N5-1C-UNV-AC48-T1-4-SNL1
Description: FABRICATED WHITE PAINTED METAL HOUSING, FABRICATED WHITE PAINTED METAL BALLAST COVERS/REFLECTORS, EXTRUDED FROSTED LINEAR PRISMATIC PLASTIC LENS BELOW LAMP, LENS PRISMS UP AND PARALLEL WITH LAMPS, LENS FROSTED BOTH SIDES. ONE U-SHAPED 2-PIECE FORMED WHITE PAINTED METAL REFLECTOR ABOVE LAMPS WITH 36 ADJUSTABLE SLOTS ON TOP AND SIDES, ADJUSTABLE REFLECTOR SET TO "DL1" FOR THIS TEST.
Light Source: TWO 28-WATT T-5 SYLVANIA FP28/841/ECO LINEAR FLUORESCENTS.
Ballast/Driver: UNIVERSAL B228PUNV-C

Summary

Lumens per Lamp: 2600 (2 lamps)
Luminaire Lumens: 3868.0 lumens
Efficiency: 74.4%
Efficacy: 62.5 lumens/watt
Spacing Criteria (0/90/45): 1.2 / 1.21 / 1.31
Luminous Opening: Rectangular w/ Sides (W: 0.33' x L: 3.65' x H: 0.02')
CIE Type: Direct

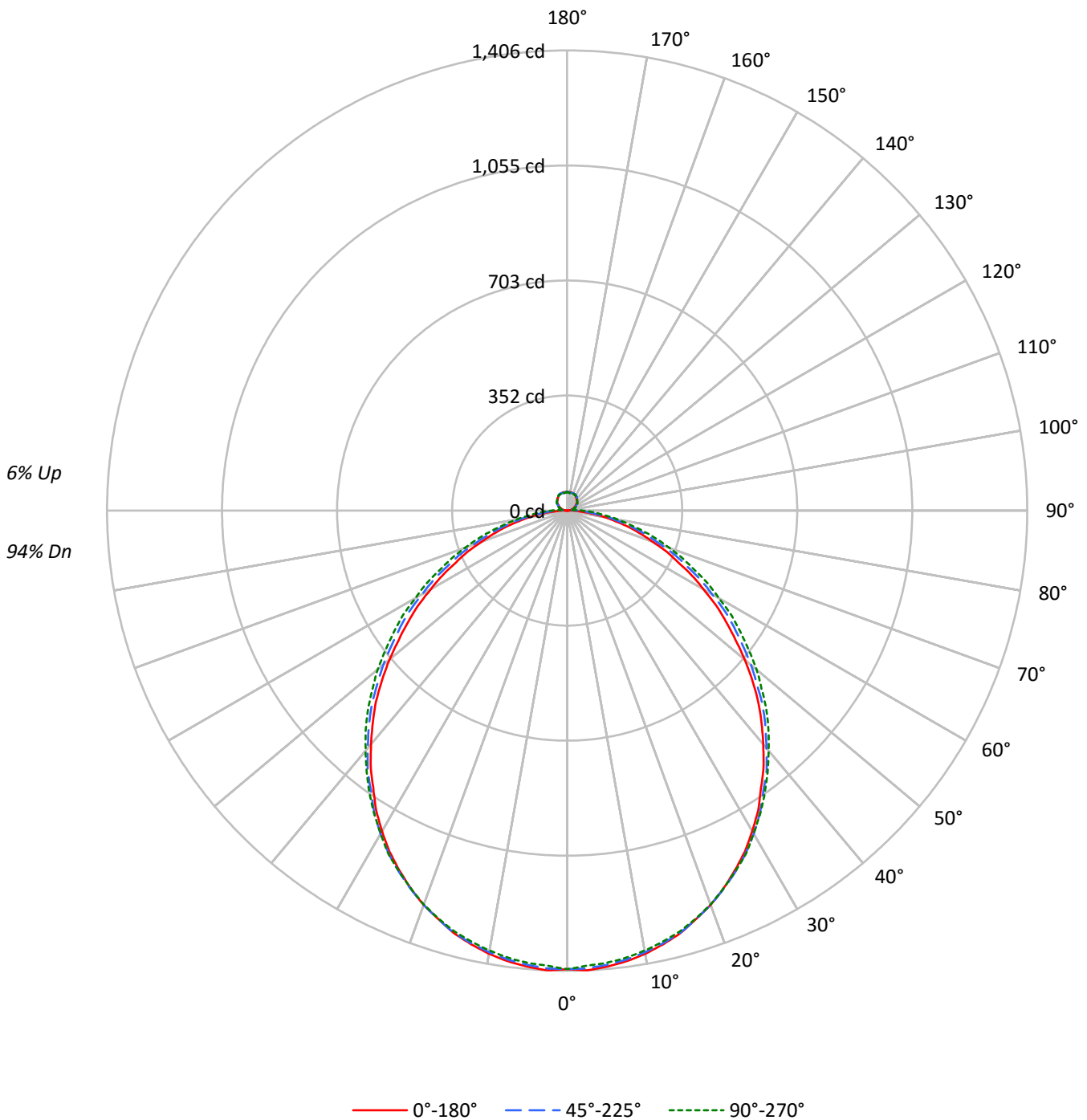
Input Watts (W): 61.9
Input Voltage (V): NR
Input Current (A_{in}): NR
Voltage Rise (V): NR
Power Factor: NR
Total Harmonic Distortion (THDi): NR
Frequency (hertz): 60
Stabilization Time: NR
Operation Time: NR
Ambient Temperature (°C): NR
Test Distance: 25 FT



TEST NUMBER: ITL68832

CATALOG NUMBER: I2-WL-2N5-1C-UNV-AC48-T1-4-SNL1

Luminous Intensity Polar Plot





TEST NUMBER: ITL68832

CATALOG NUMBER: I2-WL-2N5-1C-UNV-AC48-T1-4-SNL1

COEFFICIENT OF UTILIZATION - ZONAL CAVITY METHOD:

RF	20				20				20				20				20	
RC	80				70				50				30				10	0
RW	70	50	30	10	70	50	30	10	50	30	10	50	30	10	50	30	10	0
RCR																		
0	88	88	88	88	85	85	85	85	80	80	80	76	76	76	72	72	72	70
1	80	77	73	71	78	74	72	69	71	68	66	67	65	63	64	62	61	59
2	73	67	62	58	71	65	61	57	62	58	55	59	56	53	56	54	51	49
3	67	59	53	48	64	58	52	48	55	50	46	52	48	45	50	46	44	42
4	61	52	46	41	59	51	45	41	49	44	40	47	42	39	45	41	38	36
5	56	47	40	36	54	46	40	35	44	38	34	42	37	34	40	36	33	31
6	52	42	36	31	50	41	35	31	40	34	30	38	33	30	36	32	29	27
7	48	38	32	28	47	38	32	27	36	31	27	35	30	26	33	29	26	24
8	45	35	29	25	44	34	29	24	33	28	24	32	27	24	31	26	23	22
9	42	32	26	22	41	32	26	22	30	25	22	29	25	21	28	24	21	20
10	39	30	24	20	38	29	24	20	28	23	20	27	23	19	26	22	19	18

AVERAGE LUMINANCE (cd/sqm):

	0°	45°	90°
0°	12588	12588	12588
5°	12613	12524	12458
10°	12535	12419	12350
15°	12422	12306	12225
20°	12239	12096	12040
25°	12001	11862	11793
30°	11705	11582	11501
35°	11297	11175	11177
40°	10892	10776	10805
45°	10451	10357	10443
50°	9860	9817	10000
55°	9233	9273	9475
60°	8580	8634	8881
65°	7900	7982	8276
70°	7218	7279	7689
75°	6663	6656	7045
80°	5961	5825	6396
85°	5111	5156	6208



TEST NUMBER: ITL68832

CATALOG NUMBER: I2-WL-2N5-1C-UNV-AC48-T1-4-SNL1

ZONAL LUMENS:

Zone	Lumens	% Fixture	% Lamp
0°-10°	132.3	3.4	2.5
10°-20°	376.2	9.7	7.2
20°-30°	560.3	14.5	10.8
30°-40°	655.1	16.9	12.6
40°-50°	651.2	16.8	12.5
50°-60°	557.4	14.4	10.7
60°-70°	404.5	10.5	7.8
70°-80°	232.0	6.0	4.5
80°-90°	82.8	2.1	1.6
90°-100°	19.5	0.5	0.4
100°-110°	21.9	0.6	0.4
110°-120°	28.9	0.7	0.6
120°-130°	33.3	0.9	0.6
130°-140°	34.5	0.9	0.7
140°-150°	31.7	0.8	0.6
150°-160°	25.2	0.7	0.5
160°-170°	15.7	0.4	0.3
170°-180°	5.3	0.1	0.1
0°-30°	1068.8	27.6	20.6
0°-40°	1723.9	44.6	33.2
0°-60°	2932.5	75.8	56.4
0°-90°	3651.8	94.4	70.2
90°-120°	70.4	1.8	1.4
90°-150°	169.9	4.4	3.3
90°-180°	216.0	5.6	4.2
0°-180°	3868.0	100.0	74.4

CANDELA DISTRIBUTION:

	0°	22.5°	45°	67.5°	90°	Flux
0°	1401	1401	1401	1401	1401	
5°	1399	1399	1393	1388	1387	133
15°	1337	1339	1336	1332	1331	376
25°	1213	1218	1217	1217	1216	558
35°	1033	1048	1045	1056	1053	647
45°	826	835	845	859	861	635
55°	593	606	623	642	646	531
65°	375	390	405	431	429	374
75°	195	203	218	237	239	206
85°	52	54	71	88	93	55
90°	0	15	30	44	47	4
95°	9	16	14	15	19	8
105°	17	20	21	22	21	18
115°	26	26	29	33	31	26
125°	35	35	37	41	39	31
135°	43	42	45	48	44	33
145°	49	49	51	53	50	31
155°	54	53	55	57	54	25
165°	56	54	56	57	56	16
175°	57	57	56	56	55	5
180°	57	57	57	57	57	



TEST NUMBER: ITL68832

CATALOG NUMBER: I2-WL-2N5-1C-UNV-AC48-T1-4-SNL1

CANDELA DISTRIBUTION (FULL):

	0°	22.5°	45°	67.5°	90°
0°	1401	1401	1401	1401	1401
2.5°	1406	1404	1400	1393	1392
5°	1399	1399	1393	1388	1387
7.5°	1389	1389	1384	1378	1378
10°	1375	1377	1370	1367	1365
12.5°	1357	1359	1354	1351	1349
15°	1337	1339	1336	1332	1331
17.5°	1309	1314	1309	1310	1307
20°	1282	1285	1282	1282	1281
22.5°	1249	1255	1251	1252	1249
25°	1213	1218	1217	1217	1216
27.5°	1175	1181	1181	1181	1183
30°	1131	1136	1140	1140	1139
32.5°	1086	1095	1096	1099	1098
35°	1033	1048	1045	1056	1053
37.5°	986	995	1001	1005	1006
40°	932	946	947	960	958
42.5°	879	888	897	908	911
45°	826	835	845	859	861
47.5°	767	780	787	809	806
50°	709	721	733	751	756
52.5°	648	662	675	701	699
55°	593	606	623	642	646
57.5°	540	552	571	591	595
60°	481	492	511	532	535
62.5°	430	441	461	483	486
65°	375	390	405	431	429
67.5°	329	339	358	378	382
70°	278	293	305	333	331
72.5°	235	245	260	282	286
75°	195	203	218	237	239
77.5°	152	163	173	196	193
80°	118	123	136	152	157
82.5°	80	90	98	120	121
85°	52	54	71	88	93
87.5°	26	32	47	65	70
90°	0	15	30	44	47
92.5°	5	14	22	26	31
95°	9	16	14	15	19
97.5°	11	17	15	14	11
100°	13	18	18	17	14
102.5°	15	19	19	20	18
105°	17	20	21	22	21
107.5°	19	22	23	26	24
110°	22	23	25	28	26



TEST NUMBER: ITL68832

CATALOG NUMBER: I2-WL-2N5-1C-UNV-AC48-T1-4-SNL1

CANDELA DISTRIBUTION (continued):

	0°	22.5°	45°	67.5°	90°
112.5°	24	25	27	31	28
115°	26	26	29	33	31
117.5°	28	28	31	36	33
120°	30	30	32	38	35
122.5°	32	32	34	40	37
125°	35	35	37	41	39
127.5°	37	37	39	42	40
130°	39	39	42	44	41
132.5°	41	41	44	46	42
135°	43	42	45	48	44
137.5°	44	44	47	50	46
140°	46	45	48	51	48
142.5°	47	47	50	52	49
145°	49	49	51	53	50
147.5°	50	50	53	54	51
150°	52	51	54	56	52
152.5°	53	52	55	56	53
155°	54	53	55	57	54
157.5°	55	53	56	57	54
160°	55	53	56	57	55
162.5°	56	53	56	57	55
165°	56	54	56	57	56
167.5°	57	55	55	56	56
170°	57	56	54	55	55
172.5°	57	56	55	54	54
175°	57	57	56	56	55
177.5°	57	57	57	57	56
180°	57	57	57	57	57

(END OF REPORT)